



# **Welcome To Moderne Tech**



# Company Profile



**Found : 1972**

**Location : Taoyuan, Taiwan**

**( near Taoyuan International Airport )**

**Employee : 300**

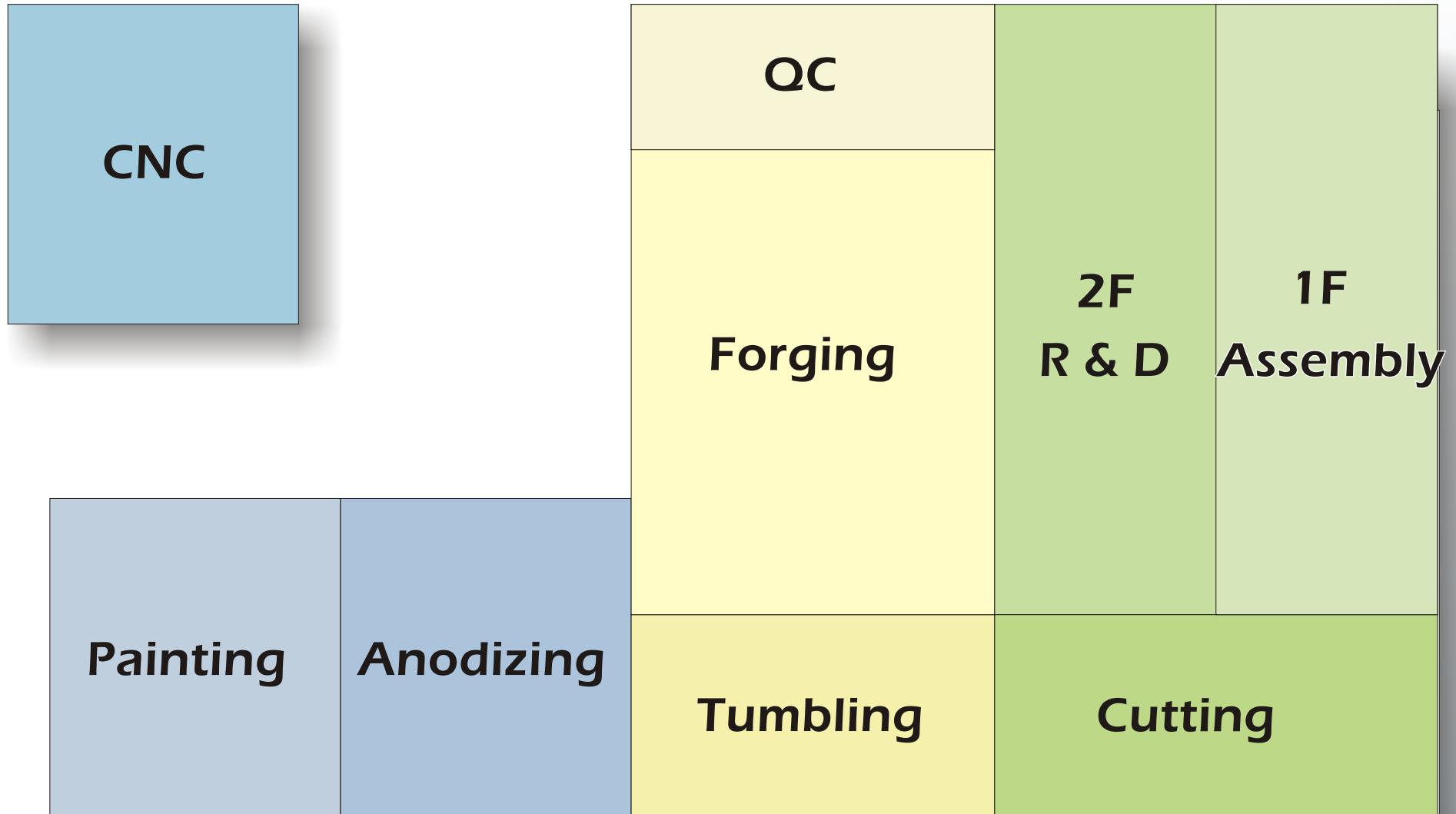
**Industry : Bicycle**

**Materials used : Aluminum ( 2xxx, 6xxx and 7xxx )**

**Focus on : 3D Forging**



# Facility Layout



# Manufacturing in House

---

**Material Cutting**



**Forging**



**Heat Treatment**



**CNC Machining**



**Finish**

Polish  
Masking  
Sand Blast  
Anodizing  
Laser etching  
Decal Applying  
Painting

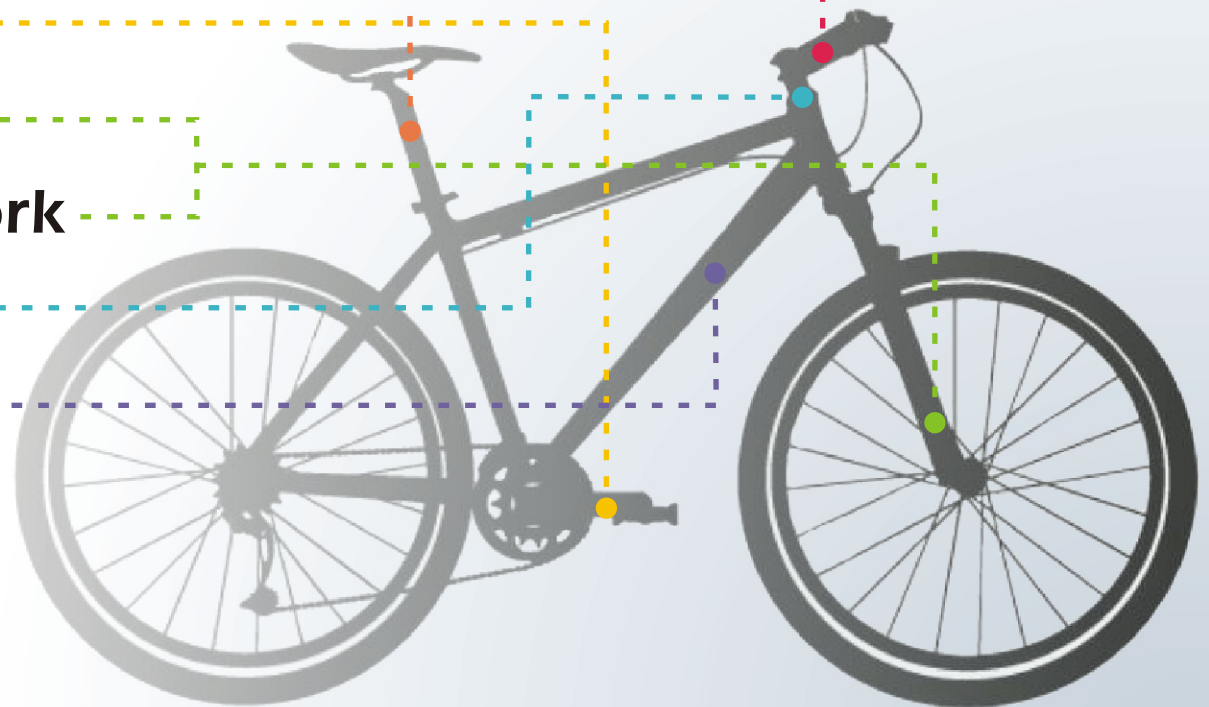


# Special Manufacturing Process in house

- **Broaching :**
  - Outer ( Fits to Lefty fork )
  - Down tube ( Fits to height adjustable seat post )
- **Gun drill :**
  - Upper tube ( Fits to height adjustable seat post )
- **Robot arm :**
  - Fork welding
- **Fork manufacturing equipment :**
  - Bending
  - Adjustment
  - Cutting

# Parts we make

- Stem
- Seat post
- Suspension seat post
- Height adjustable seat post
- Crank arm
- Suspension fork
- Unicon Suspension fork
- Headset lock
- Frame parts



# Clients

POST<sup>®</sup>  
MODERNE

## Bicycle companies



**DERBY CYCLE**

**FLYER**



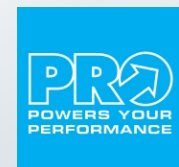
## Component brands



crankbrothers



fi'zi:k



# Our advantages

---

- **Manufacturing : More than 99% processes are made in house.**
  - Better quality control
  - Faster delivery
  
- **Molds making : 100% build in house.**
  - Shorter development
  - Faster modification
  - Quicker sampling
  
- **Core strength : 3D forging**
  - Hollow crank with bigger space inside
  - Longer extrusion
  - Thinner wall thickness
  - Light weight
  - Less materials used



# Our advantages

- **e Management**

- ERP flow control
- Web base PDM & QC system
- Web UI projects management

- **CAD / CAE / CAM**

- Solidworks / Simulation Professional
- Cimatron CAD / CAM



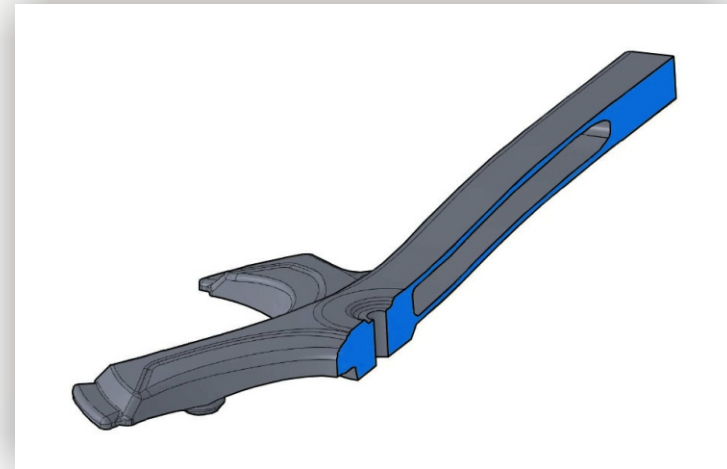
# Parts from our experienced know how

- Longer extrusion
- Made of one piece ( no welding )



# Parts from our experienced know how

- Hollow crank arm
- Bigger space inside
- Thinner wall thickness
- Light weight



# **Functional approval**

---

- **Test machines from FEBe ( Acquired from Germany )**
- **Test machines built by ourselves and approved by**
  - **SRAM**
  - **Shimano Pro**
- **Testing standard :**
  - **ISO standard**
  - **Internal standard**
- **Test records :**
  - **Upload to the server and keep permanently**

# Quality Assurance

---

- CMM measuring
- 2.5D Projector measuring
- Date code trace system ( Especially for process tracking )





# Appreciation

---



**Moderne Tech** has established more than 40 years. We are the first bicycle parts manufacturer using forge in Taiwan.

As a manufacturer of high end forging parts, has all the required manufacturing process in house is one of our major characters and advantages. We are especially specialized in multiple forging which is a forging process that can make parts more complicated in shapes and various specs. That is the reason that most of our clients do business with us due to we are capable of offering unique technical support and service.

In the past, present and coming future, we will continuous to assist clients to develop and manufacture more valuable parts.